

Beautiful and spacious three bedroom apartment with park view in Tempelhof, furnished

| | | | | |
|-----------------------------|---|-------------------------------|------------------------|------------------------------|
| short-term rental apartment | Rent incl. add. costs 2.921,00 EUR per Month | Living space ca. 130,00 qm | Number of rooms 4,0 | Available from 01.09.2024 |
|-----------------------------|---|-------------------------------|------------------------|------------------------------|

Other dates

| | |
|---------------------------|----------------------|
| District | Tempelhof-Schöneberg |
| Deposit | 4.000,00 EUR |
| Floor | 2.Floor |
| Available until | Open-ended |
| Minimum rental length | 90 days |
| Maximum number of tenants | 6 |
| Smoking / Nonsmoker | Non-smokers only |
| Balcony | yes |
| Elevator | No |
| Garden | No |

Facilities

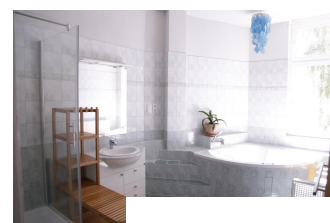
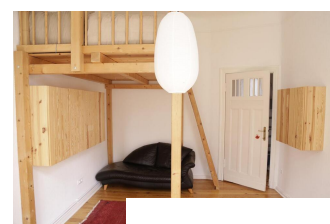
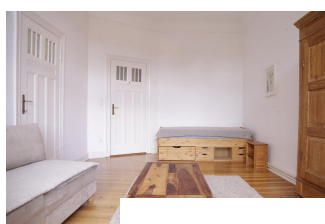
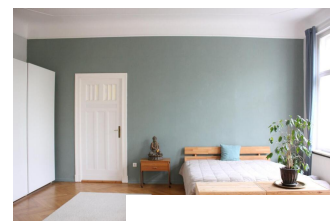
| | |
|------------------------|----------------------|
| - balcony | - |
| - bed | - sleeping couch |
| - plank floor | - doublebed |
| - bathroom with shower | - fitted kitchen |
| - guest bathroom | - gascentral heating |
| - internet | - cable/Sat TV |
| - kitchen | - |
| - refrigerator | - parquet flooring |
| - radio | - dishwasher |
| - telephone | - table/desk |
| - dryer | - VCR |
| - bathroom with tub | - washing machine |
| - cooker | - comfortable |
| - TV | - ... |
| - | |

References

Please read our Notes on currency conversion under <http://www.homecompany.de/en/currency-info>

Website synopsis

<http://berlin.homecompany.de/en/object/AG136739>



Description

Charming three bedroom apartment in the heart of Tempelhof with park view. Beautiful apartment with stucco and herringbone parquet. Fitted kitchen with large fridge and freezer, AEG oven, gas stove, dishwasher, toaster and dining table. Very spacious daylight bathroom with bathtub/whirlpool and shower. An additional guest toilet with dryer is also available. Living room with fireplace and dining table. Bedroom with doublebed (180cm) and wardrobe. Second room(balcony room) with single bed (90 cm) and sofa bed (1m). Third room with loft bed (150cm). Wifi, flat screen and cable TV included. Subway (U6) in five minutes walking distance. Quiet location at the Bosepark and Klarenseepark. No lift!

Print out 20.05.2024