

Bright one bedroom apartment in Caputh, fully furnished

short-term rental apartment	Rent incl. add. costs 1.700,00 EUR per Month	Living space ca. 65,00 qm	Number of rooms 2,0	Available from 01.01.2025
--------------------------------	---	------------------------------	------------------------	------------------------------

Other dates

District	Caputh
Deposit	1.450,00 EUR
Floor	1.Floor
Available until	Open-ended
Minimum rental length	30 days
Maximum number of tenants	2
Smoking / Nonsmoker	Non-smokers only
Balcony	yes
Elevator	No
Garden	No

Facilities

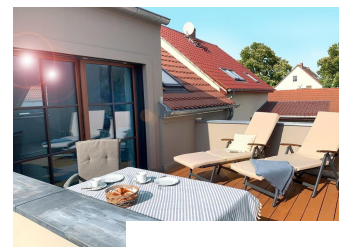
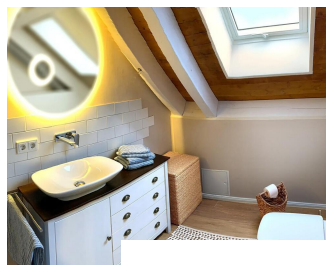
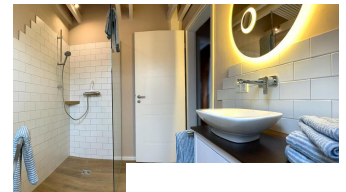
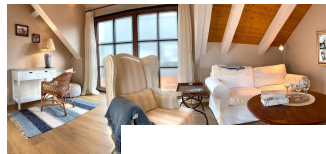
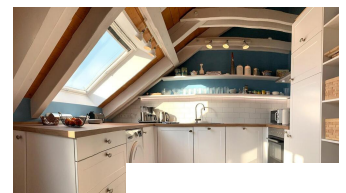
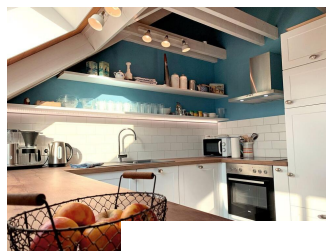
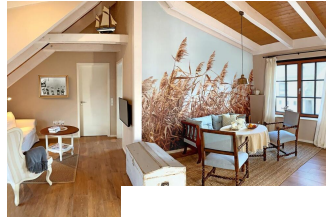
- | | |
|----------------------|----------------------------|
| - bed | - sleeping couch |
| - doublebed | - fitted kitchen |
| - gascentral heating | - internet |
| - cable/Sat TV | - kitchen |
| - | - refrigerator |
| - microwave | - american kitchenparkin.. |
| - dishwasher | - terrace |
| - | - table/desk |
| - dryer | - washing machine |
| - eat in kitchen | - central heating |
| - cooker | - comfortable |
| - TV | |
| - kitchen | |
| - with dishwasher | - fitted kitchen |
| - open-plan kitchen | |
| - | |

References

Please read our Notes on currency conversion
under <http://www.homecompany.de/en/currency-info>

Website synopsis

<http://berlin.homecompany.de/en/object/AG143079>



Description

The light-flooded attic apartment is located about 8 km south-west of Potsdam directly at the Caputh Castle Park. It is located in an absolutely quiet cul-de-sac and is lovingly furnished in Scandinavian country style. An apartment to feel good. Of course with super fast internet 250 Mbit/sec. Supermarket and bus stop can be easily reached on foot.

Charging facility for e-cars. Internet and GEZ included.

Print out 20.05.2024