

## First time use - 2 bedroom flat, at Ku'Damm central

short-term rental apartment	Rent incl. add. costs 3.795,00 EUR per Month	Living space ca. 137,00 qm	Number of rooms 4,0	Available from 15.08.2024
-----------------------------	---	-------------------------------	------------------------	------------------------------

## Other dates

District	Charlottenburg-Wilmersdorf
Deposit	9.000,00 EUR
Floor	2.Floor
Available until	Open-ended
Minimum rental length	90 days
Maximum number of tenants	4
Smoking / Nonsmoker	Non-smokers only
Balcony	yes
Elevator	No
Garden	No

## Facilities

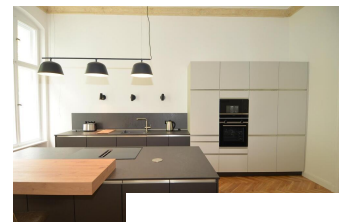
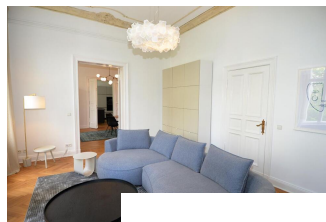
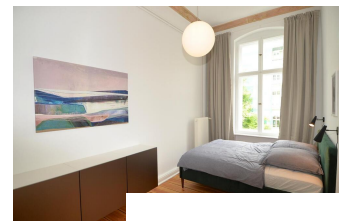
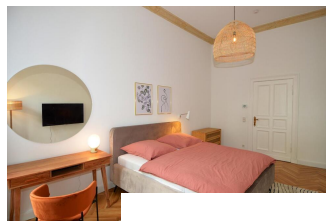
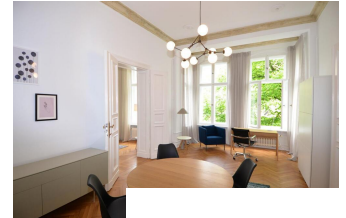
- balcony
  - sleeping couch
  - bathroom with tub
  - fitted kitchen
  - refrigerator
  - parquet flooring
  - dishwasher
  - pictures available
  - **flooring material**
  - parquet
  - **kitchen**
  - with dishwasher
  - **further rooms**
  - guest toilet
  - **technics**
  - Wifi reception
  - **type of heating**
  - central heating system
- - doublebed
  - guest bathroom
  - internet
  - microwave
  - radio
  - central heating
  - fitted kitchen

## References

Please read our Notes on currency conversion under <http://www.homecompany.de/en/currency-info>

## Website synopsis

<http://berlin.homecompany.de/en/object/AG144809>



## Description

First occupation after extensive renovation and completely newly furnished.

The beautiful old building has high ceilings with lavishly renovated stucco decorations. All floors have a first-class bone parquet, the bathroom, the guest toilet and the kitchen are tiled.

The apartment has 2 bedrooms, each with a double bed.

The balcony, which is located exactly on the corner of the house, is accessible from the living room.

The large fitted kitchen offers every comfort and is fully equipped. From here you get to the dining room, which also has a desk and can be used as a study.

The bathroom is equipped with a shower and a bathtub. Washing machine and internet are in the apartment.

All rooms are accessible from a central hallway. There are no connecting rooms.

Location: The apartment is located in Berlin Halensee not far from Kurfürstendamm. The S-Bahn station Halensee can be reached in 5 minutes (S1, S2, S5 and S 26). The next door Westfälische Str. offers various shops and retailers for shopping.

360 panoramic View:

<https://tour.feelestate.com/view/portal/id/VZV4R>

Print out 20.05.2024