

Light-flooded, large 2 room apartment in Mitte, furnished

short-term rental apartment	Rent incl. add. costs 1.890,00 EUR per Month	Living space ca. 76,00 qm	Number of rooms 2,0	Available from 01.10.2024
--------------------------------	---	------------------------------	------------------------	------------------------------

Other dates

District	Mitte
Deposit	4.200,00 EUR
Floor	2.Floor
Available until	Open-ended
Minimum rental length	90 days
Maximum number of tenants	2
Smoking / Nonsmoker	Non-smokers only
Balcony	yes
Elevator	Yes
Garden	Yes

Facilities

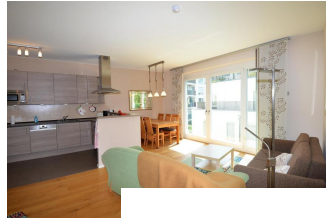
- bathroom
- with shower
- flooring material
- parquet
- kitchen
- with dishwasher
- fitted kitchen
- technics
- Wifi reception
- type of heating
- central heating system

References

Please read our Notes on currency conversion
under <http://www.homecompany.de/en/currency-info>

Website synopsis

<http://berlin.homecompany.de/en/object/AG145036>



Description

The light-flooded, large apartment on the 2nd floor with elevator has a large living room with open kitchen and balcony, bedroom and bathroom as well as a small hallway.

The spacious living area integrates a fully equipped fitted kitchen, a large dining table with six chairs and a comfortable seating area with 2 sofas. In the 20 square meter bedroom, in addition to a 2 m x 2 m double bed, there is space for a work area with a desk, a wardrobe and an open shelf for personal items. Both rooms have large floor-to-ceiling windows with external blinds; in the bedroom additionally with blackout interior blinds. The south/west balcony is accessible from the living room and opens up an unobstructed view of the countryside and enough space for a relaxing sunbather after work. There is underfloor heating and oiled oak parquet flooring throughout the living area. The small hall area, kitchen and bathroom have a tiled floor. The 9 square meter bathroom with daylight has a shower and bathtub, a washing machine and a towel heater that can be controlled separately. The individually selected friendly furnishings in all rooms and a warm color scheme on the walls convey a relaxed feel-good atmosphere. WLAN with 500 mBit is available in the entire apartment. A bicycle cellar and an open bicycle parking space in the garden are available for shared use.

Grocery stores as well as small, elegant restaurants and shops are within easy walking distance in the neighborhood.

360 Panoramic view:

<https://tour.feelestate.com/view/portal/id/VZVBW>

balcony
sleeping couch
double bed
bathroom with shower
fitted kitchen
garden
internet
refrigerator
microwave
american kitchen
parquet flooring
radio
dishwasher
table/desk
bathroom with tub
washing machine
central heating

Print out 20.05.2024