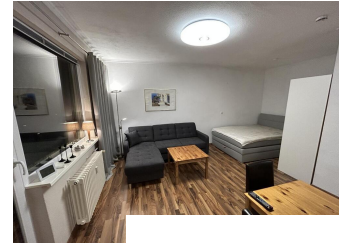


apartment / short-term rental / Berlin

short-term rental apartment	Rent incl. add. costs 1.090,00 EUR per Month	Living space ca. 32,00 qm	Number of rooms 1,0	Available from 01.01.2025
--------------------------------	---	------------------------------	------------------------	------------------------------

Other dates

District	Spandau
Deposit	1.000,00 EUR
Floor	2.Floor
Available until	Open-ended
Minimum rental length	90 days
Maximum number of tenants	1
Smoking / Nonsmoker	Non-smokers only
Balcony	yes
Elevator	No
Garden	No



Facilities

- balcony	-
- bed	- sleeping couch
- doublebed	- bathroom with shower
- fitted kitchen	- internet
- cable/Sat TV	- TV
- kitchen	-
- refrigerator	- laminate floor
- microwave	- american kitchentable/..
- washing machine	- central heating
- bathroom	
- with shower	
- flooring material	
- laminate	
- kitchen	
- fitted kitchen	
- technics	
- Wifi reception	
- type of heating	
-	



Description

Comfortable apartment with balcony in Spandau Wilhelmstadt
 Just renovated mainly new furnished very functional arranged
 apartment with balcony in a green and quiet surrounding on the south
 side area of the Heerstrasse.

Distances:

- to the bus station Sandstrasse less than 5min. walk,
- to the food store + bakery + restaurants not more than 5min. walk,
- to the bay of river Havel "Scharfe Lanke" approx. 5min. by bus,
- to the fair of Berlin approx. 10min. by car,
- to the S-Bahn-station Heerstrasse as well as the old town of Spandau approx. 15min. by bus,

2/2

- to the Kuhdamm approx. 30min. by bus

Further topics:

- Bright rooms thanks to the triple glazed big windows and the led-lights in all areas
- Boxspring bed with topper in comfort height
- Couch with sleep-function
- Modern fitted kitchen
- Balcony with south-east-orientation and view into the green + terracotta floor
- Corridor with wardrobe + adjoining room with washing machine
- Cellar and bicycle storage room
- Well-kept surrounding with park areas as well as lakes/river (Havel, Scharfe Lanke, Stößensee, Wannsee, Suedparkteich) and bike paths close by

All extra costs are included except power and water beyond the ordinary consumption, costs beyond the internet flat-rate and broadcasting fees, if any.

Sonstige Regeln: Refer to house rules...

References

Please read our Notes on currency conversion
 under <http://www.homecompany.de/en/currency-info>

Website synopsis

<http://berlin.homecompany.de/en/object/AG146030>

Print out 20.05.2024