

## Very nice House in Berlin Lichtenrade

|                         |   |                               |                        |                              |
|-------------------------|---|-------------------------------|------------------------|------------------------------|
| short-term rental house | Rent incl. add. costs<br>2.300,00 EUR per Month | Living space ca.<br>115,00 qm | Number of rooms<br>5,0 | Available from<br>01.02.2025 |
|-------------------------|---|-------------------------------|------------------------|------------------------------|

### Other dates

|                           |                      |
|---------------------------|----------------------|
| District                  | Tempelhof-Schöneberg |
| Deposit                   | 4.600,00 EUR         |
| Floor                     | Bottom floor         |
| Available until           | 31.07.2026           |
| Minimum rental length     | 180 days             |
| Maximum number of tenants | 5                    |
| Smoking / Nonsmoker       | Non-smokers only     |
| Balcony                   | yes                  |
| Elevator                  | No                   |
| Garden                    | Yes                  |

### Facilities

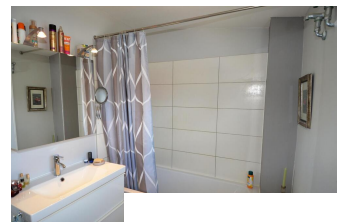
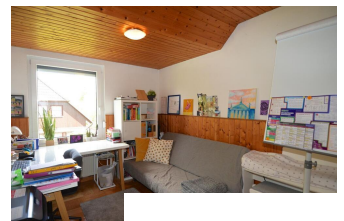
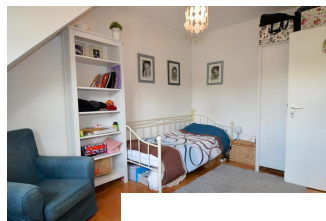
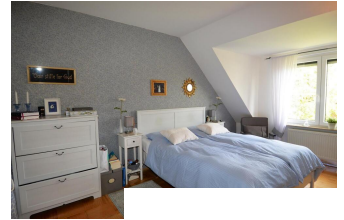
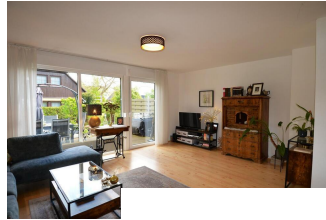
|                   |                            |
|-------------------|----------------------------|
| - bed             | - sleeping couch           |
| - doublebed       | - bathroom with shower     |
| - fitted kitchen  | - guest bathroom           |
| - garden          | -                          |
| - HiFi            | - internet                 |
| - kitchen         | -                          |
| - refrigerator    | - laminate floor           |
| - microwave       | - american kitchenparkin.. |
| - dishwasher      | - telephone                |
| - terrace         | -                          |
| - table/desk      | - dryer                    |
| - VCR             | - bathroom with tub        |
| - washing machine | - eat in kitchen           |
| - central heating | - ...                      |
| -                 |                            |

### References

Please read our Notes on currency conversion under <http://www.homecompany.de/en/currency-info>

### Website synopsis

<http://berlin.homecompany.de/en/object/AG146555>



### Description

Semi-detached house fully furnished with new facade and new windows.

On the ground floor there is the living room with access to the terrace and garden, the dining area and an open modern fitted kitchen with all appliances including a dishwasher. The guest toilet is also located here.

On the first floor of the house there is the master bedroom with a double bed, another bedroom with a single bed and a study with a sofa bed, as well as the bathroom.

In the basement of the house there is another living room and bedroom, an extra shower, the washing machine and the dryer. There is also a fitness room and a workshop.

The house has a parking space, a large terrace and a garden.

The house is quietly and safely located in Lichtenrade, within walking distance of the kindergarten, primary school, high school and comprehensive school. Aldi, Rewe and Lidl and doctors are also within walking distance. The Schichauweg S train station can be reached in 20 minutes on foot.

Potsdamer Platz can be reached in 30 minutes by car. BER airport in 25 minutes. Tesla Gigafactory in 35 minutes. Potsdam in 30 minutes.

The house is suitable for 2 adults and up to 3 children, or for 3 adults.

Electricity included up to a maximum of EUR 115 per month.

360 Panoramic View:

<https://tour.feelestate.com/view/portal/id/VZT6R>