

## Modern, Sunny One Bedroom Flat in Prenzlauer Berg

short-term rental apartment	Rent incl. add. costs 1.400,00 EUR per Month	Living space ca. 51,00 qm	Number of rooms 2,0	Available from 14.09.2024
--------------------------------	---	------------------------------	------------------------	------------------------------

### Other dates

District	Pankow
Deposit	2.000,00 EUR
Floor	3.Floor
Available until	Open-ended
Minimum rental length	90 days
Maximum number of tenants	2
Smoking / Nonsmoker	Non-smokers only
Balcony	no
Elevator	Yes
Garden	Yes

### Facilities

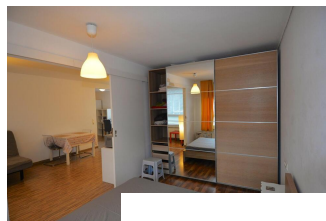
- sleeping couch	- doublebed
- fitted kitchen	- garden
-	- cable/Sat TV
- kitchen	-
- laminate floor	- american kitchenradio
- table/desk	- bathroom with tub
- eat in kitchen	- central heating
- comfortable	- pictures available
- cooker	- tiled floor
- washing machine	- TV
- refrigerator	
- <b>flooring material</b>	
- laminate	- tiles
- <b>kitchen</b>	
- fitted kitchen	- open-plan kitchen
-	

### References

Please read our Notes on currency conversion  
under <http://www.homecompany.de/en/currency-info>

### Website synopsis

<http://berlin.homecompany.de/en/object/AG117942>



### Description

Bright one bedroom flat in Prenzlauer Berg, located in a quiet side street near the Greifswalder Str S-Bahn station. It benefits from a large livingroom with view into the courtyard, 2 lifts, condo washing machine. The kitchen is modernly and completely equipped (kettle, toaster, etc. are included). The flat comes with an extra fold-out sofa suitable for up to 2 persons. The bathroom has a blow-dryer, towels, linens, vacuum cleaner, flatiron. Two closets in the bedroom. Bedlinen and towels available, too.

Very well connected to the airports. Only 35 minutes away from Airport Schönefeld.

The basement provides laundry facilities. Washers are available to use.

Apartment without internet.

<https://tour.feelestate.com/view/portal/id/VR54R>