

Charming 1 Bedroom Flat, Charlottenburg, Berlin

short-term rental apartment	Rent incl. add. costs 1.150,00 EUR per Month	Living space ca. 50,00 qm	Number of rooms 2,0	Available from 01.11.2024
--------------------------------	---	------------------------------	------------------------	------------------------------

Other dates

District	Charlottenburg-Wilmersdorf
Deposit	1.150,00 EUR
Floor	3.Floor
Available until	Open-ended
Minimum rental length	90 days
Maximum number of tenants	2
Smoking / Nonsmoker	Non-smokers only
Balcony	no
Elevator	No
Garden	No

Facilities

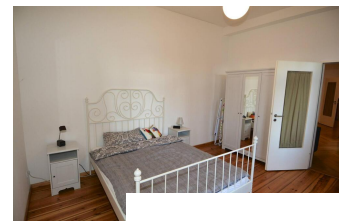
- | | |
|----------------------------|--------------------|
| - bed | - sleeping couch |
| - plank floor | - doublebed |
| - bathroom with shower | - fitted kitchen |
| - gascentral heating | - internet |
| - refrigerator | - microwave |
| - offene Kche | - parquet flooring |
| - radio | - table/desk |
| - washing machine | - cooker |
| - bathroom | |
| - with shower | |
| - flooring material | - parquet |
| - floor boards | |
| - kitchen | |
| - fitted kitchen | |
| - technics | |
| - Wifi reception | |

References

Please read our Notes on currency conversion under <http://www.homecompany.de/en/currency-info>

Website synopsis

<http://berlin.homecompany.de/en/object/AG120961>



Description

The bright flat is situated in the quiet rear building of a beautiful old building, and it is located near the famous Spree waterside and the TU university, central Charlottenburg location. Situated on the 3rd floor, it benefits from a nice view into the quiet backyard. The flat comprises a comfortable bedroom with a doublebed, a good sized livingroom, a modern open pantry kitchen, and a modern and clean bathroom with a shower. Features include parquet floors, internet, microwave oven, washing machine, desk, guest divan, etc.

Nice West Berlin location in the heart of Tiergarten, very good infrastructure, only a minute away from the bus stop and a 10 minute walk away from the underground station (U2 Ernst-Reuter-Platz). Shops and restaurants are nearby. This flat will be rented for min. 1 month and max. 6 months.

360 panoramic view:

<https://tour.feelestate.com/view/portal/id/VRW06>