

## 2 room flat with balcony in Prenzlauer Berg

short-term rental apartment	Rent incl. add. costs 2.080,00 EUR per Month	Living space ca. 85,00 qm	Number of rooms 2,0	Available from 30.06.2025
--------------------------------	---	------------------------------	------------------------	------------------------------

### Other dates

District	Pankow
Deposit	2.000,00 EUR
Floor	1.Floor
Available until	Open-ended
Minimum rental length	90 days
Maximum number of tenants	2
Smoking / Nonsmoker	Non-smokers only
Balcony	yes
Elevator	No
Garden	No

### Facilities

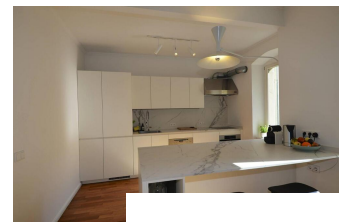
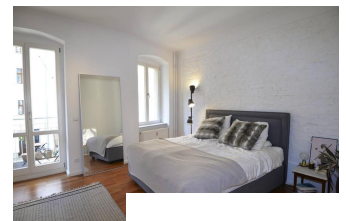
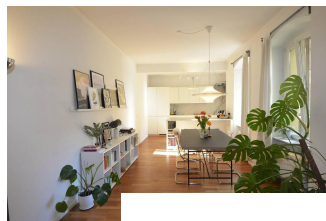
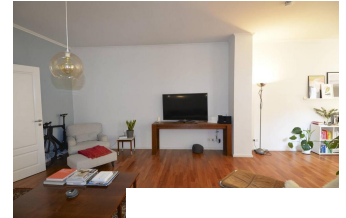
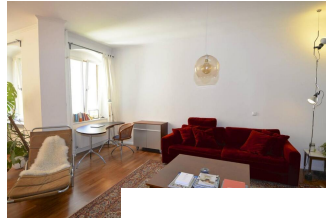
- balcony	-
- bed	- sleeping couch
- doublebed	- bathroom with shower
- Einbauküche	- internet
- kitchen	-
- refrigerator	- parquet flooring
- table/desk	- dryer
- washing machine	- central heating
- cooker	- tiled floor
- pictures available	- comfortable
- TV	- dishwasher
- <b>bathroom</b>	
- with shower	
- <b>flooring material</b>	- tiles
- parquet	
-	

### References

Please read our Notes on currency conversion under <http://www.homecompany.de/en/currency-info>

### Website synopsis

<http://berlin.homecompany.de/en/object/AG126951>



### Description

This bright 2 room apartment was gorgeously equipped and offers a gorgeous balcony and a lot of space. The old building has just been renovated and is located in an extremely desirable Prenzlauer Berg neighbourhood near Kollwitzplatz and Kulturbrauerei. The modern and clean kitchen is completely equipped. Internet and washing machine are included. Warm and airy ambience.

Nice location in a quiet side street nestled between Kollwitzplatz, Kulturbrauerei and the Eberswalder station (U2) which is only a moment away. Amazing variety of cafés, restaurants and nightlife in the closer vicinity. Very popular and presentable neighbourhood.