

## One bedroom flat in Prenzlauer Berg, new

|                                |   |                              |                        |                              |
|--------------------------------|---|------------------------------|------------------------|------------------------------|
| short-term rental<br>apartment | Rent incl. add. costs<br>1.600,00 EUR per Month | Living space ca.<br>52,00 qm | Number of rooms<br>2,0 | Available from<br>15.08.2024 |
|--------------------------------|---|------------------------------|------------------------|------------------------------|

### Other dates

|                           |                  |
|---------------------------|------------------|
| District                  | Pankow           |
| Deposit                   | 1.600,00 EUR     |
| Floor                     | 2.Floor          |
| Available until           | Open-ended       |
| Minimum rental length     | 60 days          |
| Maximum number of tenants | 2                |
| Smoking / Nonsmoker       | Non-smokers only |
| Balcony                   | yes              |
| Elevator                  | Yes              |
| Garden                    | No               |

### Facilities

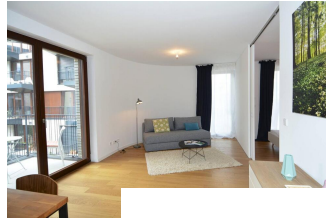
- **bathroom**
- with shower
- **flooring material**
- parquet
- **kitchen**
- with dishwasher
- **technics**
- Wifi reception
- **type of heating**
- central heating system
- fitted kitchen

### References

Please read our Notes on currency conversion  
under <http://www.homecompany.de/en/currency-info>

### Website synopsis

<http://berlin.homecompany.de/en/object/AG134140>



### Description

Newly built apartment in Berlin Prenzlauer Berg very modern, sunny, and quiet townhouse on the 2nd floor to the leafy, large courtyard in 2018 completed condominium (Gotland) in south-west. Orientation. Furnished with stylish, high quality furniture and fitted kitchen. Parquet floor in a complete apartment. Floor-to-ceiling windows that give a lot of light, large balcony, floor heating.

It may be possible to rent a parking space in the garage of the house.

Good location near Arnimplatz with many cafes and restaurants. Close to public transport Tram M1, M50 and U and S-Bahn Schönhauserallee (U2, Ringbahn)

360 panoramic view:

<https://panocreator.com/view/fullscreen/id/VRQGC>

balcony  
sleeping couch  
doublebed  
bathroom with shower  
fitted kitchen  
internet  
kitchen  
refrigerator  
american kitchenparquet flooring  
dishwasher  
table/desk  
washing machine  
central heating  
pictures available  
comfortable