

Bright 2-room-apartment in Kleinmachnow, furnished

| | | | | |
|--------------------------------|---|------------------------------|------------------------|------------------------------|
| short-term rental apartment | Rent incl. add. costs 1.550,00 EUR per Month | Living space ca. 60,00 qm | Number of rooms 2,0 | Available from 06.10.2024 |
|--------------------------------|---|------------------------------|------------------------|------------------------------|

Other dates

| | |
|---------------------------|------------------|
| District | |
| Deposit | 3.100,00 EUR |
| Floor | 2.Floor |
| Available until | Open-ended |
| Minimum rental length | 90 days |
| Maximum number of tenants | 2 |
| Smoking / Nonsmoker | Non-smokers only |
| Balcony | yes |
| Elevator | Yes |
| Garden | No |

Facilities

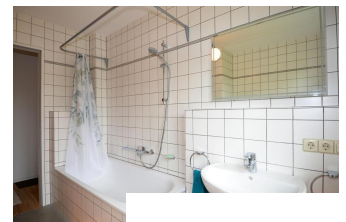
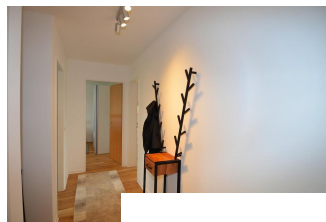
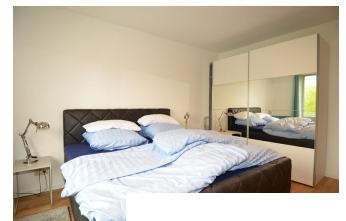
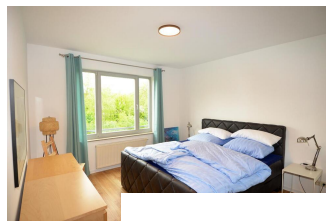
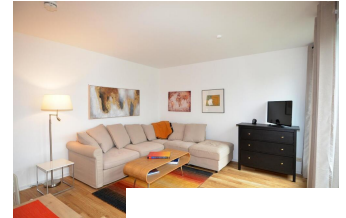
| | |
|------------------------|---------------------|
| - balcony | - |
| - bed | - sleeping couch |
| - plank floor | - double bed |
| - bathroom with shower | - fitted kitchen |
| - garage | - |
| - internet | - cable/Sat TV |
| - kitchen | - |
| - refrigerator | - parquet flooring |
| - parking place | - Splmaschine |
| - terrace | - |
| - table/desk | - bathroom with tub |
| - washing machine | - central heating |
| - pictures available | - cooker |
| - comfortable | - ... |

References

Please read our Notes on currency conversion
under <http://www.homecompany.de/en/currency-info>

Website synopsis

<http://berlin.homecompany.de/en/object/AG144531>



Description

Chic apartment in Kleinmachnow adjacent to Berlin south. Upscale ambience, lovingly furnished two-room apartment. The apartment is bright and newly furnished and fully equipped.

Wifi is available throughout the apartment.

The large balcony invites you to have breakfast in summer.

A bicycle storage room is also available in the building of the house.

A parking space in the underground car park can also be used.

The location in Kleinmachnow is ideal for a stay in Berlin or Potsdam. Kleinmachnow is a preferred residential area in southern Berlin, directly on the city limits of Berlin-Zehlendorf. Lots of greenery and quick access to the A115 (Avus). All facilities of daily life are within walking distance, from supermarkets to restaurants, doctors and pharmacies, etc.

This newly renovated, modernly furnished apartment is in a quiet location on the outskirts of Kleinmachnow, between Berlin and Potsdam and surrounded by greenery. The A115 motorway can be reached quickly and takes you to Berlin and Potsdam in just a few minutes. The nearest supermarket can be reached in 7 minutes and the bus stop in 3 minutes. A high-quality residential area on the outskirts of Berlin with nearby forest areas and extensive walking paths along the Teltow Canal. 360 panoramic view:

<https://tour.feelestate.com/view/portal/id/VZRH8>

Print out 16.05.2024