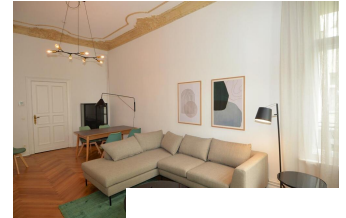


First time use - 2 bedroom flat, at Ku'Damm central

short-term rental apartment	Rent incl. add. costs 3.430,00 EUR per Month	Living space ca. 98,00 qm	Number of rooms 3,0	Available from 15.08.2024
-----------------------------	---	------------------------------	------------------------	------------------------------

Other dates

District	Charlottenburg-Wilmersdorf
Deposit	5.000,00 EUR
Floor	2.Floor
Available until	Open-ended
Minimum rental length	90 days
Maximum number of tenants	4
Smoking / Nonsmoker	Non-smokers only
Balcony	yes
Elevator	No
Garden	No



Description

First occupation after extensive renovation and completely newly furnished.

The beautiful old building has high ceilings with lavishly renovated stucco decorations. All floors have a first-class bone parquet, the bathroom and the kitchen are tiled.

The apartment has 2 bedrooms, each with a double bed. The balcony is accessible from one bedroom.

In addition to the sofa area, the living room also has a dining table with 4 chairs.

The bathroom is equipped with a shower. Washing machine and internet are in the apartment.

All rooms are accessible from a central hallway. There are no connecting rooms.

Location: The apartment is located in Berlin Halensee not far from Kurfürstendamm. The S-Bahn station Halensee can be reached in 5 minutes (S1, S2, S5 and S 26). The next door Westfälische Str. offers various shops and retailers for shopping.

360 Panoramic View:

<https://tour.feelestate.com/view/portal/id/VZVYQ>

Facilities

- balcony	-
- bed	- sleeping couch
- doublebed	- bathroom with shower
- fitted kitchen	- cooker
- internet	- refrigerator
- microwave	- parquet flooring
- dishwasher	- central heating
- washing machine	- TV
- pictures available	
- bathroom	
- with shower	
- flooring material	
- parquet	
- kitchen	
- with dishwasher	- fitted kitchen
- technics	
- Wifi reception	
- type of heating	
-	

References

Please read our Notes on currency conversion under <http://www.homecompany.de/en/currency-info>

Website synopsis

<http://berlin.homecompany.de/en/object/AG144811>