

First Time use: Bright and furnished apartment

| | | | | |
|-----------------------------|---|------------------------------|------------------------|------------------------------|
| short-term rental apartment | Rent incl. add. costs 1.500,00 EUR per Month | Living space ca. 55,00 qm | Number of rooms 2,0 | Available from 19.09.2024 |
|-----------------------------|---|------------------------------|------------------------|------------------------------|

Other dates

| | |
|---------------------------|------------------|
| District | Mitte |
| Deposit | 3.000,00 EUR |
| Floor | 2.Floor |
| Available until | Open-ended |
| Minimum rental length | 180 days |
| Maximum number of tenants | 2 |
| Smoking / Nonsmoker | Non-smokers only |
| Balcony | yes |
| Elevator | No |
| Garden | No |

Facilities

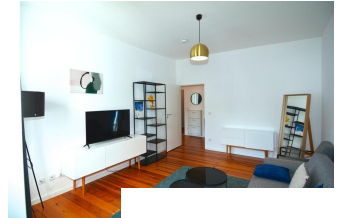
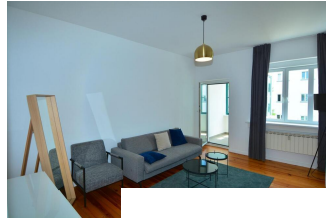
- | | |
|----------------------------|---------------|
| - comfortable | - cooker |
| - fitted kitchen | - tiled floor |
| - balcony | - |
| - pictures available | - TV |
| - table/desk | |
| - flooring material | |
| - tiles | |
| - kitchen | |
| - fitted kitchen | |

References

Please read our Notes on currency conversion under <http://www.homecompany.de/en/currency-info>

Website synopsis

<http://berlin.homecompany.de/en/object/AG144982>



Description

First Time use:

Beautiful two-room apartment near the Rehberge park in Berlin. The apartment is furnished and has a bedroom and a living room. Washing machine and dishwasher are available. In the living room there is a dining area and a large, comfortable sofa. The kitchen is very spacious and offers another, small dining table.

A highlight of the apartment is the bay window with a view of the green inner courtyard.

The apartment is in the countryside with a quick connection to the city center: Friedrichstrasse can be reached in 10-15 minutes with the underground line U6 without having to change trains. Popular location in a quiet, green side street, very good infrastructure, various shops are within easy walking distance, near the park.

The building is located in the listed Friedrich-Ebert-Siedlung, the offered apartment is on the mezzanine floor.

360 Panoramic View:

<https://tour.feelestate.com/view/portal/id/VZV10>