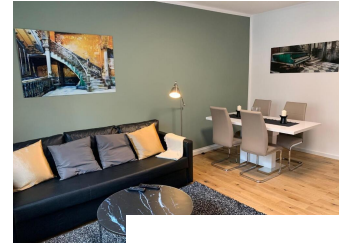


One bedroom apartment in Schöneberg, furnished

| | | | | |
|--------------------------------|---|------------------------------|------------------------|------------------------------|
| short-term rental apartment | Rent incl. add. costs 1.690,00 EUR per Month | Living space ca. 75,00 qm | Number of rooms 2,0 | Available from 01.11.2024 |
|--------------------------------|---|------------------------------|------------------------|------------------------------|

Other dates

| | |
|---------------------------|----------------------|
| District | Tempelhof-Schöneberg |
| Deposit | 3.000,00 EUR |
| Floor | Bottom floor |
| Available until | Open-ended |
| Minimum rental length | 90 days |
| Maximum number of tenants | 2 |
| Smoking / Nonsmoker | Non-smokers only |
| Balcony | no |
| Elevator | Yes |
| Garden | No |



Description

Core and luxury renovated 2-room apartment in a central, good location in Berlin Schöneberg.

This bright and modern 2-room apartment is completely new and fully furnished.

New laminate flooring is installed in all three rooms. The bedroom has a large 2x2m bed.

In the living room you will find both a small dining area and a couch area for relaxing and watching TV.

In addition to the wardrobe and glass table, there is also a TV here. The kitchen is totally modern in white with black tiled floors and fully equipped with all appliances and crockery/cutlery. The bathroom has a large shower and a washing machine.

Internet in the form of V-DSL is of course available and you can move in and live straight away. A cellar for storage space is available.

In just a few minutes you can walk to Viktoria-Luise-Platz (U4) and many nice cafes and shopping opportunities.

Facilities

| | |
|----------------------------|----------------------|
| - vorhanden. | - cooker |
| - internet | - bed |
| - doublebed | - kitchen |
| - | - comfortable |
| - washing machine | - dryer |
| - tiled floor | - parquet flooring |
| - sleeping couch | - TV |
| - bathroom with shower | - pictures available |
| - central heating | - fitted kitchen |
| - dishwasher | - table/desk |
| - microwave | - refrigerator |
| - handicapped accessible | |
| - bathroom | |
| - with shower | |
| - flooring material | |
| - parquet | |
| - | |
| - | |

References

Please read our Notes on currency conversion under <http://www.homecompany.de/en/currency-info>

Website synopsis

<http://berlin.homecompany.de/en/object/AG145839>